



2021  
BROCHURE AND PRICELIST  
LEARNING IN THE HEART OF ENGLAND

indirizzo



Inghilterra

# TABLE OF CONTENTS

## INTRODUCTION

- 3 Principal's message
- 5 inlingua Cheltenham on the Map
- 6 Why choose inlingua Cheltenham?
- 7 Cheltenham Highlights
- 8 inlingua Cheltenham and inlingua International
- 9 inlingua Cheltenham Facilities

## GENERAL ENGLISH

- 11 General English (Language Skills Programme)
- 12 General English One to One Courses
- 13 General English Combination Courses
- 14 IELTS/Cambridge First/Cambridge Advanced Preparation
- 15 Online Courses + Gymglish
- 16 General and Business English (GBE)
- 17 Social Programme
- 18 Study Tours and Mini Stays
- 20 Work Experience Placement/Internship
- 22 English for Customer Service, Hospitality and Internship
- 23 State School Placement
- 26 Aviation English
- 27 Military English
- 28 English 50+ Gardens and Culture

## SUMMER SCHOOL

- 31 English Extra Summer Programmes
- 32 Academic English Summer Programmes
- 32 Pay-as-you-go Summer Programme

## TEACHER TRAINING

- 35 Certificate in TESOL
- 36 Teacher Training - CLIL (Erasmus+)
- 37 Teacher Refresher Course (Erasmus+)

## ACCOMMODATION

- 38 Host Family Accommodation
- 39 Other Options

## GENERAL INFORMATION

- 41 How to get to inlingua Cheltenham
- 42 Your First Day
- 43 Public Holidays
- 44 General Information
- 45 Enrolment Form
- 47 Additional Expenses 2020
- 49 Terms and Conditions





# inlingua Cheltenham on the Map

The United Kingdom is the very home of the English language and the perfect destination to learn the language in its most natural environment.

In Cheltenham you can improve your English in pleasant and tranquil surroundings, yet still be within a short train ride of many of the biggest cities of the UK.

## AIRPORTS:

**Heathrow:** 1 hr 45 mins

**Gatwick:** 2.5 hrs

**Manchester:** 2 hrs

**Liverpool:** 2 hrs

**Stansted:** 2 hrs 35 mins

**Luton:** 2 hrs

**East Midlands:** 1 hr 45 mins

**Bristol:** 1 hr 15 mins

**Birmingham:** 1 hr 15 mins

## PLACES OF INTEREST:

**Central London:** 2.5 hrs

**Bristol:** 1 hr

**Cardiff:** 1.5 hrs

**Oxford:** 1 hr

**Bath:** 1 hr 25 mins

**Stratford upon Avon:** 45 minutes

**Stonehenge:** 1.5 hrs

**The Cotswolds:** 5 mins

**Gloucester:** 30 mins

You can reach us by:



TRAIN



COACH



TAXI







## Full English Immersion

Cheltenham has a population of 120,000 and the people who live here are predominately British. It is a typical English town where you can experience real English life and culture. Students will be taught by a native speaking teacher and stay in a native speaking family, a true immersion programme.

## Accent

Cheltenham had no discernible accent, so the English spoken is clear and understandable.

## Central Location

The school is based in the centre of Cheltenham, only 50 metres away from the main high street. Cheltenham is centrally located in the UK with easy access to other destinations for example: Bristol, Oxford, Bath, London, Cardiff and Birmingham.

## Safe Area

The town has a very low crime rate and students will feel safe in the town centre and suburban areas. It is currently a Purple Flag area of the UK which means it is safe and secure.

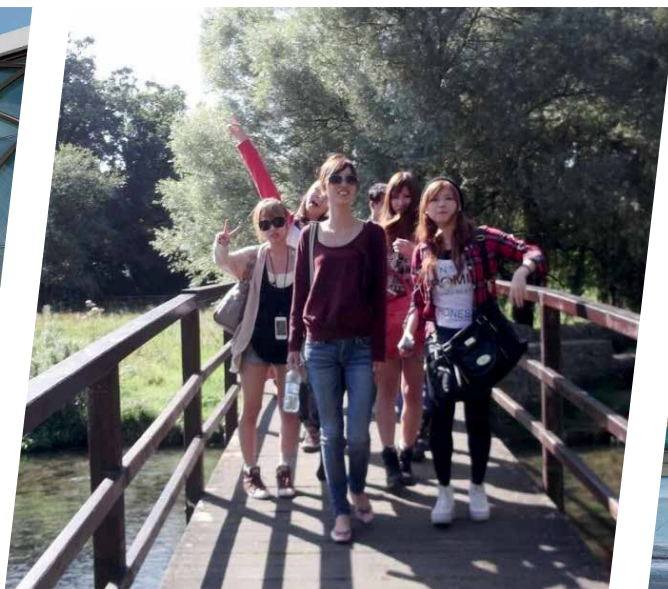
## Accommodation

Accommodation for students is either a walk or a short bus journey away. Students will be impressed how quick and easy it is to get around the town, either walking to school or going home at night to their homestay.

## Non EFL Town

We are the only private English language school locally, which provides maximum exposure to the language, culture and people.

# Why Choose inlingua Cheltenham?



# Cheltenham Highlights

Cheltenham is a vibrant and exciting English town, in the heart of the Cotswolds, an area of outstanding natural beauty. Here you can concentrate on improving your English in a pleasant and tranquil environment without the stress of busier destinations. Cheltenham is a university town with a reputation for its excellent shops, restaurants, cafes, bars, pubs, clubs, cinemas and theatres.

## Festivals

Cheltenham has festivals running all throughout the year. The most famous being the Cheltenham Gold Cup in March, where people from all over the world come for the horse racing, this is a 5 day annual event with a spectacular finale. Other festivals include music, science, literature and food.

## Arts and Culture

Cheltenham is a very arts-focussed town and has three theatres, stunning Georgian architecture and boasts some of the most interesting museums and art galleries in the country. Many a pleasant afternoon can be spent exploring the town itself or visiting the museums and parks which are only a short walk away from the school.

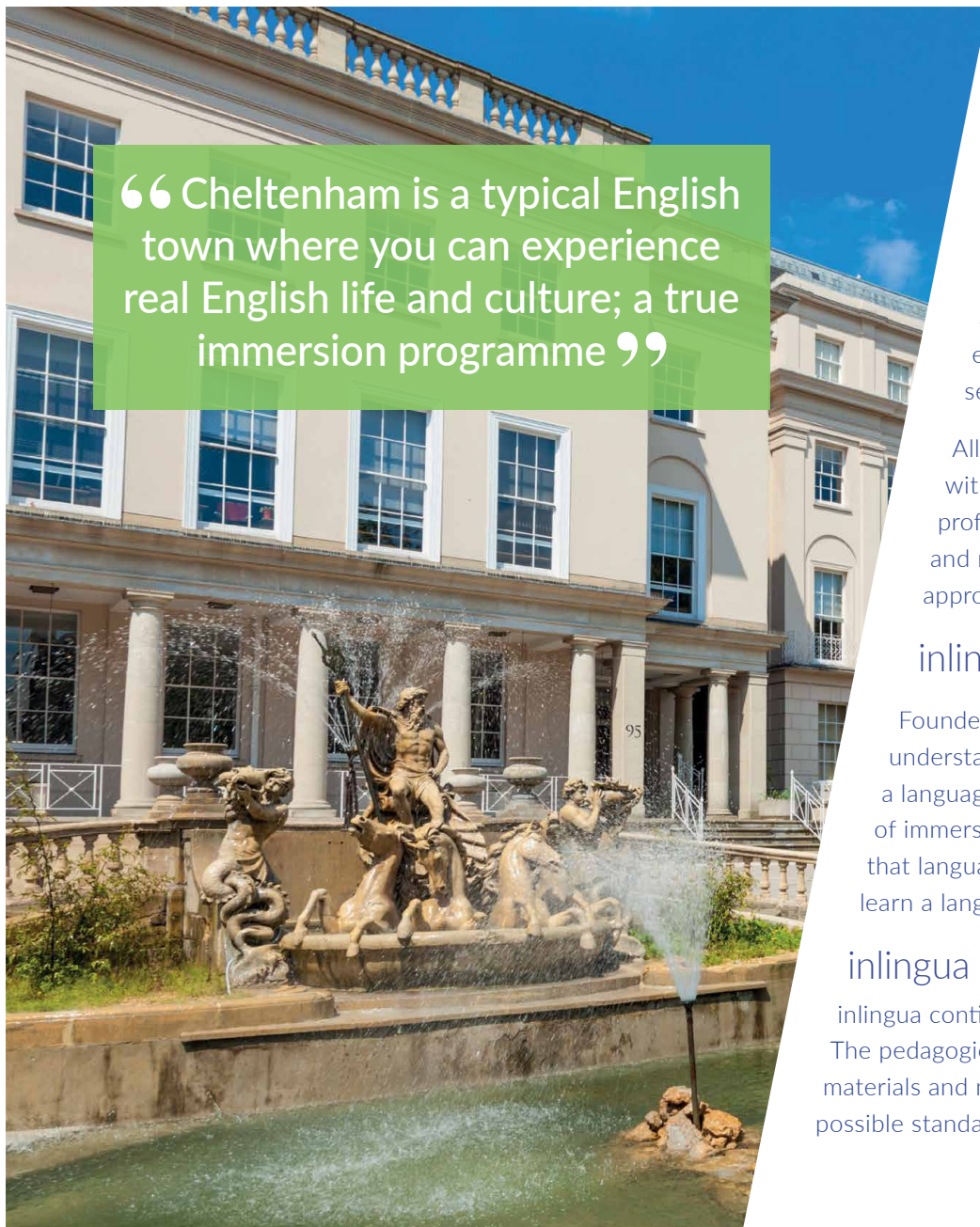
## Shopping

Regularly declared one of the best towns to shop, Cheltenham has a great mix of well-known and independent shops, department stores and boutiques, where you will be able to find exclusive clothes and gifts.

## Night Life

The town has a night life scene for every taste – from fancy wine bars to pubs, great restaurants, nightclubs and live music. There is something for everyone.





“Cheltenham is a typical English town where you can experience real English life and culture; a true immersion programme”

# inlingua Cheltenham and inlingua International

## inlingua Cheltenham

The school was founded in 1990 and since then has established itself as a provider of high-quality English courses. We will continue to strive to exceed expectations for our students with academic excellence and great service every day.

All our teachers are CELTA or Cert. TESOL qualified as an absolute minimum, with many qualified at Diploma level and beyond. Several of our teachers have professional business experience and qualifications and understand the business and related linguistic needs of their students. This means we can offer a tailor-made approach for every student to help them reach their goals.

## inlingua International

Founded in Bern, Switzerland in 1968 inlingua has dedicated itself to understanding best how people learn and the most effective way of teaching a language. This research has evolved over the last forty years, but the key theme of immersion has remained the same: Learning a language from a native speaker of that language by speaking and listening, is universally accepted as the best way to learn a language quickly and effectively.

## inlingua method

inlingua continues to be the first choice for thousands of language learners worldwide. The pedagogical department in Bern are constantly updating and developing new teaching materials and methods for use exclusively in inlingua centres. This helps to ensure the highest possible standard and continuity in all centres within the inlingua organisation.

# inlingua Cheltenham Facilities

## Location

inlingua Cheltenham comprises of three well maintained period buildings in the centre of Cheltenham, making it a perfect location to be at the heart of the action. With 28 classrooms, we can teach up to 200 students at any one time.

## Business Centre

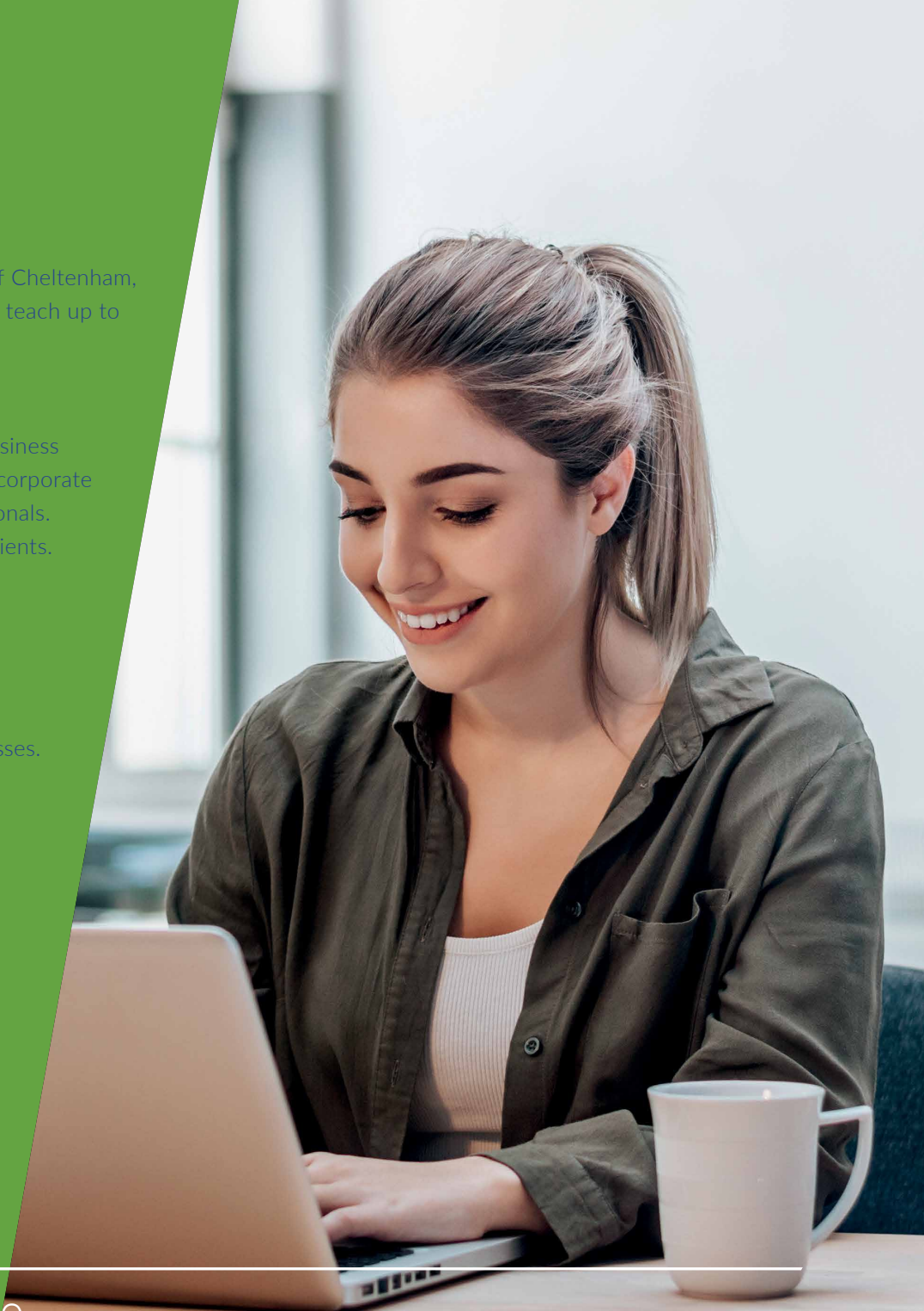
Our Business Centre is a quiet haven for those who wish to come to the UK to study Business English. As one of the few schools in the country that offer a separate building for their corporate clients, this is a serious and tranquil environment to study amongst like-minded professionals. There is a separate common room, study area and social programme for our corporate clients.

## Main School

Our main school is next door to the Business Centre. Students at our main school study our General English programmes. This also includes courses of English for the over 50s, Teacher Training, Aviation and Military English, Mini Stays, School integration, Work Experience (Internship), English + courses for beginners and adults plus evening classes.

Our campus has the following facilities:

- Free Wi-Fi throughout the school
- 45 computers for students use
- 3 film rooms for learning or recreation
- Recreational computer room
- Learning Centre
- Computers in each classroom
- Reading Library
- Large common room and garden
- Membership of Cheltenham Ladies College Public Gym and Swimming Pool (This is FREE for students studying in the Business Centre or students staying for 6 weeks or more in the General English (Main) school)





# General English





# Language Skills Programmes

These English courses are available all year round. The LSP 20 and 30 are General and Intensive English courses, visa compliant and offer the following structure: Morning lessons focus on grammar and language skills. In the afternoon students can take additional skills lessons in Academic English as well as preparation courses for IELTS , Cambridge First, Cambridge Advanced and ESOL qualifications.

## Intensive English LSP 30: 22.5 hours per week

Our most popular course of 30 lessons per week (22.5 hours) of intensive English. Classes run from 0900 to 1500 per day including breaks. The course is based around General English in the morning where the four skills are taught and in the afternoon we offer skills lessons and IELTS, Cambridge First and Advanced exam preparation. The class size is maximum 12 students.

## General English LSP 20: 15 hours per week

This is a popular programme for those who wish to have a less intense course or can only do morning lessons. This course is 20 lessons per week (15 hours) and runs from 0900-1215 including a short break. The course covers the four skills of General English. Class sizes maximum 12 students.

## General English LSP 10: 7.5 hours per week

For those students who do not require a visa or are working in the area we offer a course of 10 lessons per week (7.5 hours). The course offers skills-based programmes with the chance of practicing the four skills and examination preparation. The time of these lessons is 1330-1500 every weekday in class of maximum size 12 students.

| Courses           | Code              | Lessons per week | 1 - 4 weeks | 5 - 8 weeks | 9 - 12 weeks | 13 - 24 weeks | 25 - 36 weeks | 37 - 48 weeks |
|-------------------|-------------------|------------------|-------------|-------------|--------------|---------------|---------------|---------------|
| General English   | LSP 10 (7.5 hrs)  | 10               | GBP 115     | GBP 100     | GBP 90       | GBP 75        | GBP 70        | GBP 65        |
| General English   | LSP 20 (15 hrs)   | 20               | GBP 295     | GBP 280     | GBP 255      | GBP 225       | GBP 195       | GBP 175       |
| Intensive English | LSP 30 (22.5 hrs) | 30               | GBP 355     | GBP 320     | GBP 295      | GBP 265       | GBP 230       | GBP 195       |

Prices includes: Tuition, Books and Materials, Full Health and Travel Insurance, Online Learning Path, Free Membership of Gym and Swimming Pool (Minimum length of stay to qualify for free membership 6 weeks)



# One to One Lessons

Individual lessons are perfect if you want to make fast progress, or if you want to focus on specific language skills or vocabulary. You can choose the number of lessons per week and the course will be designed especially for you and your linguistic needs.

## Language Skills One to One Programme

| Summary               | Code    | Lessons per week | Cost per week |
|-----------------------|---------|------------------|---------------|
| One to One lessons    | MCIP 10 | 10 (7.5 hours)   | GBP 460       |
|                       | MCIP 20 | 20 (15 hours)    | GBP 850       |
| 45 minutes per lesson | MCIP 30 | 30 (22.5 hours)  | GBP 1195      |
|                       | MCIP 40 | 40 (30 hours)    | GBP 1415      |

**Dates:** All year round, start any Monday **Level:** Any **Age:** Adults aged 16+

**Prices includes:** Tuition, Books and Materials, Full Health and Travel Insurance, Online Learning Path, Free Membership of Gym and Swimming Pool (Minimum length of stay to qualify for free membership 6 weeks)



# Combination Programme

## General English PLUS One to One Classes

### Options available

LSP 30 + 5 or 10 one to one classes LSP 20 + 5 or 10 one to one classes

**Dates:** Start any Monday

**Class Size:** 12 + 1 to 1

**Levels:** Elementary to Advanced

**Age:** Adults aged 16+

If you have any specific needs that you wish to focus on outside of group lessons, you can combine our LSP General English courses on page 11 with extra one to one lessons.

## Language Skills Combination Programme

| Summary   | Code      | Lessons per week | Cost per week |
|---|-----------|------------------|---------------|
| One to One lessons<br><br>45 minutes per lesson | LSP 20+5  | 25 (18.75 hours) | GBP 490       |
|   | LSP 20+10 | 30 (22.5 hours)  | GBP 675       |
|   | LSP 30+5  | 35 (25.75 hours) | GBP 550       |
|   | LSP 30+10 | 40 (30 hours)    | GBP 735       |

**Prices includes:** Tuition, Books and Materials, Full Health and Travel Insurance, Online Learning Path, Free Membership of Gym and Swimming Pool (Minimum length of stay to qualify for membership 6 weeks).





# English + Exam Preparation

## IELTS Preparation

IELTS is the most important exam for English language learners required by UK and US universities. If you are intending to do a degree in the UK you will need an IELTS score from an approved UKVI SELT (Secure English Language Testing) testing centre.

The intensive English course LSP30 offers General English in the morning with more academic skills work and IELTS exam strategies in the afternoons. The mornings lessons are General English and, in the afternoon, the IELTS elective.



## Cambridge First/Cambridge Advanced Preparation

Cheltenham itself is a preparation centre for many ESOL exams which provide a recognised English language qualification that are acceptable to schools, universities and employers worldwide. You can prepare for the exam in Cheltenham.

The intensive English course LSP 30 offers General English in the morning and Academic English in the afternoons which includes Cambridge First (FCE) and Cambridge Advanced (CAE) Preparation in separate classes.

Please note: that if you are looking to achieve a particular score, we will test your English ability online before accepting your booking for this course to ensure that your goal is realistic.

# Online Courses

Online courses will never substitute an immersion programme here in Cheltenham, but it will offer another learning experience which suits your lifestyle, finances and the time you have available for learning and improving your English.

## One to one/Two to one/Three to one

Taking part in your course online can be an efficient and cost-effective way to continue your learning, especially if you need to fit it around other studies, a job or family commitments. For large companies, this is an easy way to train international staff working in different time zones, who cannot find a mutually convenient time to get together.

After our initial online test through our website, you can select any of the option below from a 30 minute lesson per day to as many hours as you wish. These online course are designed to fit round your hectic life and be available when you are ready.

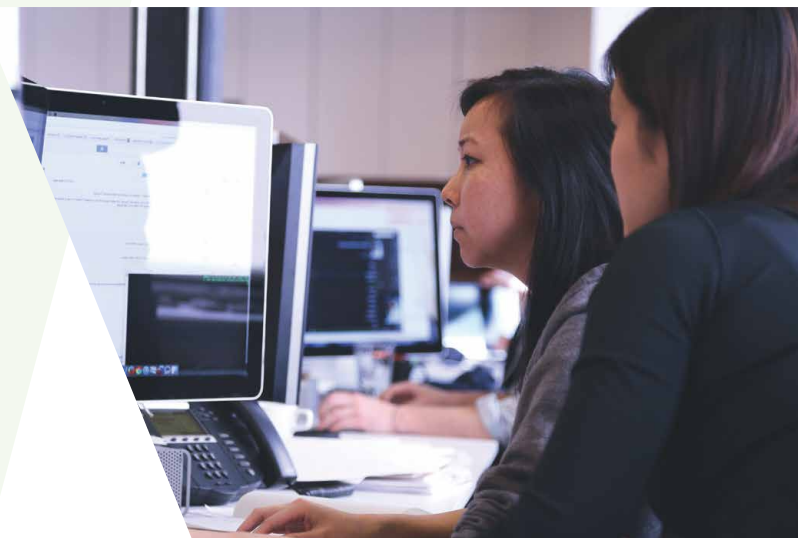
The teachers will use a variety online text including whiteboard software. They will offer all four skills (Reading, Writing, Listening and Speaking) but if you wish to cover something specific then this will followed. Students who wish to work on IELTS, Cambridge Examinations, TOEFL, TOEIC etc., these are available. We can also offer Business English and Professional English Skills such as negotiating, presentation, meetings, interviewing and telephoning as well as specific business sector vocabulary and content in many professions

## Online platforms used:

Our highly experienced online teachers can use a variety of systems for the **course** whichever suits you and available in your country. We can use for example Zoom, Skype, Microsoft Teams and Cisco etc.

## Gymglish

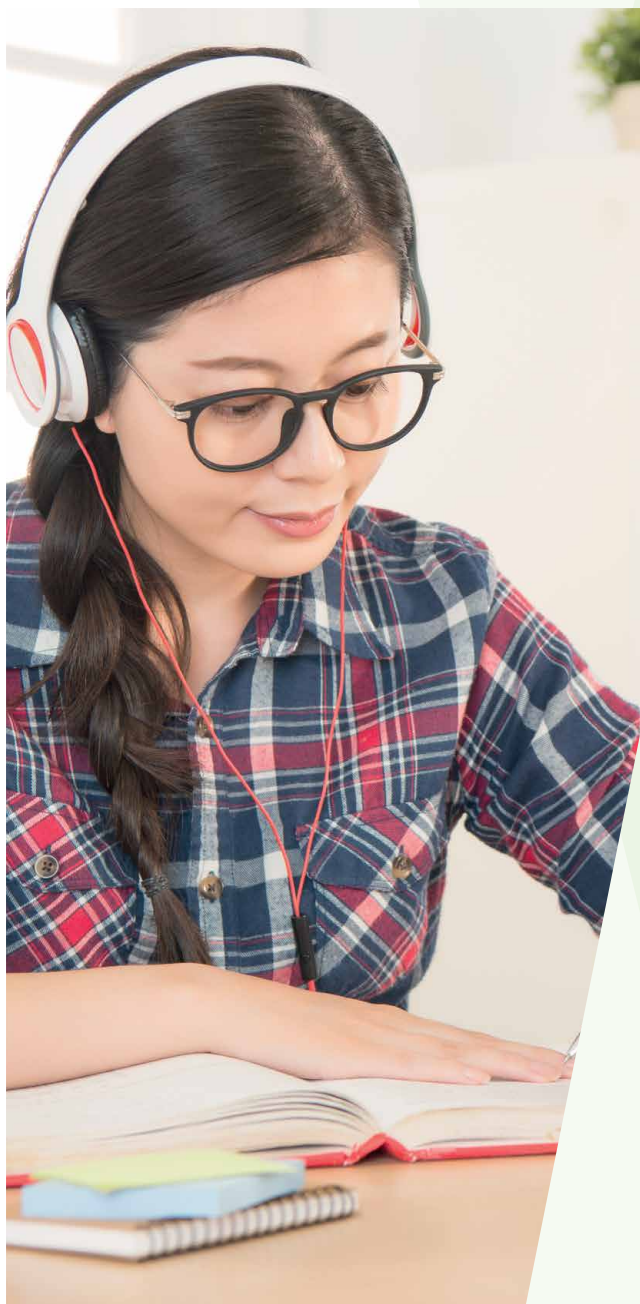
As an alternative to our more intense online we offer a less intensive course which allows to learn English at a more leisurely pace. The first month is **FREE** and then if you enjoy the 15 minute lessons 5 days a week you can then choose to pay a small fee per month to continue the software adapts to your level and increases in difficulty as your English improves. The link to start the first month **FREE** is: [www.gymglish.com/partner/inlingua-cheltenham/1184](http://www.gymglish.com/partner/inlingua-cheltenham/1184)



## General and Business English Online Courses (Beginner to Advanced Level)

| Type of Online course   | Length of the lesson | Price per person |
|---|----------------------|------------------|
| One to one  | 30 minutes           | £25              |
| One to one  | 60 minutes           | £40              |
| Two to one  | 30 minutes           | £20              |
| Two to one  | 60 minutes           | £25              |
| Three to one  | 60 minutes           | £20              |
| Group up to 6 people  | 60 minutes           | £10              |
| <b>All online material will be provided by the teacher</b><br><b>Pricing offers:</b><br>Minimum purchase of 10 hours for each course.<br>Purchase over 20 hours 5% discount<br>Purchase over 40 hours 10% discount<br>Purchase over 60 hours 15% discount |                      |                  |





# General & Business English (GBE)

LSP20 (General English 20 lessons morning) PLUS PSP 10 (Business English 10 lessons (GBE30))  
OR

LSP20 (General English 20 lessons morning) PLUS PSP 20 (Business English 20 lessons) (GBE40)

**Number of lessons/hours:** 30 or 40 lessons per week (22.5 or 30 hours)

**Course Dates:** All year round, start any Monday. Maximum class size: 12 (LSP) +4 (PSP)

**Minimum stay:** 1 week **Levels taught:** Elementary to Advanced **Age:** Adults 18+

**Description:** This course gives you the option to combine General English with a dedicated specialist Business Centre course in the afternoon.

Mornings will concentrate on General English and developing your language skills, in the afternoon you will concentrate on Business English in our Business Centre with our corporate clients in a mini group session with a maximum of 4 people per class.

FREE Linguaskill exam with every course: Linguaskill is a recognised Business English examination for many multi-national companies across Europe and could help your career prospects for the future.

| Course Summary   | Start Dates                                     | Course Code | Number of weeks | Fees          |
|--|---|-------------|-----------------|---------------|
| Group training 30 lessons per week.<br><br>Lesson duration 45 minutes. | Starting dates: Every week, throughout the year | GBE30       | 1-4             | £470 per week |
|  |   | GBE30       | 5-8             | £395 per week |
|  |   | GBE30       | 9-12            | £385 per week |
|  |   | GBE30       | 13-24           | £345 per week |

| Course Summary   | Start Dates                                     | Course Code | Number of weeks | Fees          |
|--|---|-------------|-----------------|---------------|
| Group training 40 lessons per week.<br><br>Lesson duration 45 minutes. | Starting dates: Every week, throughout the year | GBE40       | 1-4             | £560 per week |
|  |   | GBE40       | 5-8             | £485 per week |
|  |   | GBE40       | 9-12            | £445 per week |
|  |   | GBE40       | 13-24           | £425 per week |

**Prices includes:** Tuition, Books and Materials, Full Health and Travel Insurance, Online Learning Path, Free Membership of Gym and Swimming Pool (Minimum length of stay to qualify for membership 6 weeks).

# General English Social Programme

We offer a full social programme throughout the year and all activities and excursions are organised and led by inlingua Cheltenham staff. During July and August we host activities every weekday afternoon and evening, plus full day excursions on a Saturday.

During the rest of the year we offer at least 2 to 3 activities per week in the evenings and a full day excursion every week. Those groups who have Tailor Made Programmes organised will have pre-arranged activities and excursions according to their individual programme. The social programme is run on a pay as you go basis unless it is part of a package/customised programme. Students must sign up and pay at reception in the lead up to the event.

Our exciting and varied Social Programme offers something for everyone and features the following:

- |                       |                                 |   |
|-----------------------|---------------------------------|---|
| » Football/Volleyball | » Theme parties                 | » Welsh Cultural Tour                         |
| » Tennis              | » Horse Racing                  | » The Royal Forest of Dean                    |
| » Boating             | » Theatre evenings              | » Spectacular Cotswolds Tour                  |
| » Badminton           | » International Food evening    | » Ancient Stonehenge and Salisbury            |
| » Swimming            | » Cream Tea at the Queens Hotel | » Harry Potter Gloucester Tour                |
| » Ten Pin bowling     | » Museum Visit                  | » University City of Oxford                   |
| » Climbing Wall       | » Quiz night                    | » Warwick Castle and Stratford-upon-Avon      |
| » Puzzlewood          | » Disco/Karaoke                 | » Bath - the Roman city                       |
| » Horse riding        | » BBQ                           | » Bristol                                     |
| » Laser Quest         | » Pizza night                   | » Birmingham – second largest city of England |
| » Gym                 | » Laser Quest                   | » Berkeley Castle                             |
| » Skittles            | » Theme Party                   |   |
| » Film evening        | » London - The Capital          |   |
| » Ghost Walk          | » Cardiff + The Big Pit         |   |
| » Cotswold Tour       |                                 |   |



“ We offer a full social programme throughout the year and all activities and excursions are organised and led by inlingua Cheltenham staff. ”





“At inlingua we will strive to exceed expectations for our students with academic excellence and great service every day.”



# Work Experience Placement/ Internship

We have been arranging Work Experience Placements or sometimes called Internships for European professionals, students and graduates since 2005. We offer unpaid work experience placements in a variety of sectors for individuals or groups.

At inlingua Cheltenham we understand that doing a work placement overseas can be a big step forward and our aim to make the process as relaxed as possible, helping you every step of the way through your new adventure.

## Why choose this course?

Taking part in a work placement can be a rewarding experience. It builds your confidence, can enhance career opportunities and more importantly helps improve your English.

We cooperate with a number of different companies and organisations that support our work placement programme.

## What you need to provide:

- An up-to-date CV detailing work experience and skills must be sent at least 6 weeks before the work placement takes place. Please liaise with your contact before arrival.

## We will send you:

- A letter outlining your work placement with relevant contact details and information about your placement.
- A letter from you explaining why you wish to do a work placement and your particular interest in this placement.
- An Enrolment form which informs us of your expectations and special requirements you may have.





## What to expect when you are here

- Contact with our work placement representatives to ensure all is running smoothly
- A chance to speak to the work placement coordinator and accommodations officer in case of any problems
- A letter of reference from the host company after completion of the work placement as well as an inlingua Certificate.

## We offer work placement in the following areas:

Agriculture

Catering

Marketing

Multimedia

IT

Business administration

Travel Tourism

Hotel

Restaurant / bar work

Retail

Charity work

Nursery

## Work placement / Internship

|                  |  |
|------------------|--|
| Summary          | Work placement available in 12 sectors               |
| Code             | WEP  |
| Lessons per week | Start any Monday except for two weeks over Christmas |
| Minimum Stay     | 2 weeks  |
| Cost             | GBP 425  |



# English for Customer Service, Hospitality and Internship

This course is designed for students who wish to combine studying English with Customer Service and Hospitality, and is specifically targeted towards those dealing with the public at large events such as International Sporting or Entertainment Event, Hospitality, and Tourism.

## Course Objectives

- An increase of English vocabulary, structures and phrases in contexts relevant to the student within Hospitality and Events Management. There will also be an emphasis on any language or skills that the student most wants to improve.
- Participation in a variety of internationally mixed activities both inside and outside the classroom to enhance and consolidate the language and grammatical structures learnt in lessons.
- Customer Service English skills and vocabulary with an emphasis on speaking.

## What the course includes:

- 30 lessons a week (20 lessons of General English and 10 lessons on English for Customer and Hospitality)
- Work Experience Placement/Internship for 50% of your stay in Hospitality or Customer
- All materials are provided and included in the price
- Full Health and Travel Insurance

## English for Customer Service Hospitality

| Summary   | Code                                     | Weeks | Cost Per Weeks |
|---|--|-------|----------------|
| First half of your course: 20 lessons per week of general English in the morning followed by 10 lessons in the afternoon on English for customer service and hospitality.<br><br>Second half of your course Work Experience or Internship in Customer Service or Hospitality. | ECSHI 30<br>(22.5) HOURS<br>+ Internship | 4     | GBP 255        |
|   |  | 8     | GBP 235        |
|   |  | 12    | GBP 205        |
|   |  | 24    | GBP 195        |

**Prices includes:** Tuition, Books and Materials, Full Health and Travel Insurance, Online Learning Path, Free Membership of Gym and Swimming Pool (Minimum length of stay to qualify for membership 6 weeks) and Placement in a local company.





# Aviation English

Aviation English is taught either as a complete course or part of a combination course. It involves General English and English for Aviation coupled with visits to Aeronautical establishments such as Gloucester, Bristol and Birmingham Airport and several Air Force bases in our area.

The course below is for Aviation English only and the following will be covered:

- Communication for general & specialised aviation functions
- Understanding of aviation vocabulary & terminology
- Oral proficiency skills for routine & unusual ATC situations
- Awareness of aviation context & environment
- Aircraft - types, structure and maintenance
- Airport - areas, layouts, equipment and planning
- Phases of flight - pushback, take-off en-route and landing
- Language of flying - communication in the air and on the ground
- Theory of flight
- Meteorology
- Navigation
- Emergency situations

| Code | Start Dates | Weeks | Course Cost |
|------|-------------|-------|-------------|
| AE1  | 8.2.2021    | 4     | GBP 995     |
| AE2  | 10.5.2021   | 4     | GBP 995     |
| AE3  | 13.9.2021   | 4     | GBP 995     |
| AE4  | 25.10.2021  | 4     | GBP 995     |

**Please note:** These are set dates, but these courses are also available on demand for groups. Price includes: 30 lessons of tuition (22.5 hours) books and materials. Full Health and Travel insurance.

**Price includes:** 30 lessons of tuition (22.5 hours) books and materials. Full Health and Travel insurance.



# Military English

The inlingua Cheltenham course in Military English is designed to prepare military and security personnel, civil servants and diplomats to take up roles where they will need to use English daily.

The training is delivered within a framework derived from the NATO STANAG 6001 language proficiency guidelines. The teacher will select elements according to the specific needs of each trainee.

- Fighting Forces
- Uniform and Equipment
- The Infantry Platoon
- Reconnaissance Patrol
- Return to Headquarters
- At the Information Post
- Battle Camp
- Weapon Handling
- Fit to Fight
- The Tank
- Survival in the Field
- Room Inspections
- Briefings Prisoners of War
- An Army Career
- Platoon in Defence
- Fire and Manoeuvre
- Appreciation
- Section in the Attack
- Debriefing
- Advance to Contact

| Code | Start Dates | Weeks | Course Cost |
|------|-------------|-------|-------------|
| ME1  | 8.2.2021    | 4     | GBP 995     |
| ME2  | 10.5.2021   | 4     | GBP 995     |
| ME3  | 13.9.2021   | 4     | GBP 995     |
| ME4  | 25.10.2021  | 4     | GBP 995     |

**Please note:** These are set dates, but these courses are also available on demand for groups. Price includes: 30 lessons of tuition (22.5 hours) books and materials. Full Health and Travel insurance.

**Price includes:** 30 lessons of tuition (22.5 hours) books and materials. Full Health and Travel insurance.





# English 50+: Gardens and Culture

(People under 50 are also welcome to join this course)

This course is specially designed for the mature student and includes English lessons in the morning and visiting places of interest in the afternoon.

The morning sessions will be used to talk about the afternoon trip and what the group are likely to see, going through the vocabulary, sentences and the expressions the group are likely to encounter on their supervised trips in the afternoon.

**Number of lessons/hours:** 20 lessons/15 hours per week (Morning lessons)

**Level taught:** Elementary to Advanced Enrolment: available to individuals and groups

**Minimum stay:** 1 week

**Maximum stay:** 3 weeks

**Age Ranges:** Mature



A sample timetable is below for 2 Weeks.

| Time of Day      | Monday   | Tuesday   | Wednesday                                    | Thursday  | Friday   | Saturday  |
|------------------|--|---|--|---|--|---|
| <b>Morning</b>   | Assessment and Tour of Cheltenham  | Lessons   | Lessons                                      | Lessons   | Lessons  | Full Day Excursion to Stratford Upon Avon             |
| <b>Afternoon</b> | Sudeley Castle and Gardens   | Cotswolds Villages of Bibury and                                    | Painswick Rocco Gardens and village walk     | Croome Park and House   | Cirencester Cathedral and visit the Roman Museum |   |
| Time of Day      | Monday   | Tuesday   | Wednesday                                    | Thursday  | Friday   | Saturday  |
| <b>Morning</b>   | Lessons  | Lessons   | Lessons                                      | Lessons   | Lessons  | Full Day Excursion to London including a River Cruise |
| <b>Afternoon</b> | Visit to The Pump Room, Holst Birthplace and finish the afternoon with Cream Tea | Coughton Court and Gardens. Learn about the Gunpowder plot and more | Worcester Cathedral and the Civil War Battle | Morgan Car Factory. A tour of a very traditional British Business | Hidcote – World Famous Arts and Crafts Garden    |   |

## English with Culture and Customs – Course Costs

| Start Dates | Cost per week Standard Homestay Half Board | Cost per week Executive Homestay Half Board | Cost per week For Hotel or B&B |
|-------------|--|---|--------------------------------|
| 10.05.2021  | GBP 755                                    | GBP 815                                     | GBP 1150                       |
| 17.05.2021  | GBP 755                                    | GBP 815                                     | GBP 1150                       |
| 07.06.2021  | GBP 755                                    | GBP 815                                     | GBP 1150                       |
| 14.06.2021  | GBP 755                                    | GBP 815                                     | GBP 1150                       |
| 05.07.2021  | GBP 755                                    | GBP 815                                     | GBP 1150                       |
| 12.07.2021  | GBP 755                                    | GBP 815                                     | GBP 1150                       |
| 09.08.2021  | GBP 755                                    | GBP 815                                     | GBP 1150                       |
| 16.08.2021  | GBP 755                                    | GBP 815                                     | GBP 1150                       |
| 06.09.2021  | GBP 755                                    | GBP 815                                     | GBP 1150                       |
| 13.09.2021  | GBP 755                                    | GBP 815                                     | GBP 1150                       |

**Price includes:** 20 lessons of tuition, all materials, transport and entrance fees to all full day and afternoon excursions and choice of accommodation. These are set dates, but these courses are also available on demand for groups of 5 or more people. The maximum length of stay is 3 weeks.



# Summer School





# English Extra Summer Programme

## English Extra Summer Programme

AGE: Students in groups aged (12-15) can ONLY join this Summer Program, Students aged 16+ can join ANY Summer Programme

This is an all-inclusive package that mixes learning and fun. This is the place to be if students are looking for a summer vacation to remember and yet satisfy parents in their search for educational value in safe surroundings. The course suits individuals and groups and offers a complete package of lessons, leisure, excursions and an excellent English host family.

The package is available between 14.6.21 and 20.8.21 and includes per week

- 20 EFL lessons (0900 - 1215)
- 3 afternoon activities
- 4 evening activities
- Friday barbecue
- 1 full day excursion
- 1 half day excursion
- Half board homestay in a single or twin room

## English Extra Summer Programme

| Course Summary                                       | Start Dates  | Course Code | Number of weeks | Fees          |
|--|--|-------------|-----------------|---------------|
| June, July and August only.<br>Minimum stay 2 weeks. | Courses start every Monday, from 14/6/2021 Courses finish on 20/8/2021 | EEXP20      | 1 - 4           | £745 per week |
|  |  |             | 5 - 8           | £695 per week |

**What is included?** 20 x 45 minute lessons per week (LSP 20), Social Programme (4 afternoon and 4 evening activities, Friday barbecue plus full day excursion on Saturday's inc. Admissions and transport), Registration fee, Accommodation Arrangement Fee and half board accommodation with host family.



# Summer School

## Academic English Extra Summer Programme (16+ only)

For those students who would like a more serious course, we offer our LSP 30 with full social programme. This course is designed for students who wish to develop their English on a more intensive course but still take part in our active social programme.

The package is available between **14.06.2021 to 20.08.2021** and includes per week:

- 30 EFL lessons per week (0900 - 1500)
- 4 evening activities
- Friday barbecue
- Full day excursion
- Half board homestay in a single or twin room

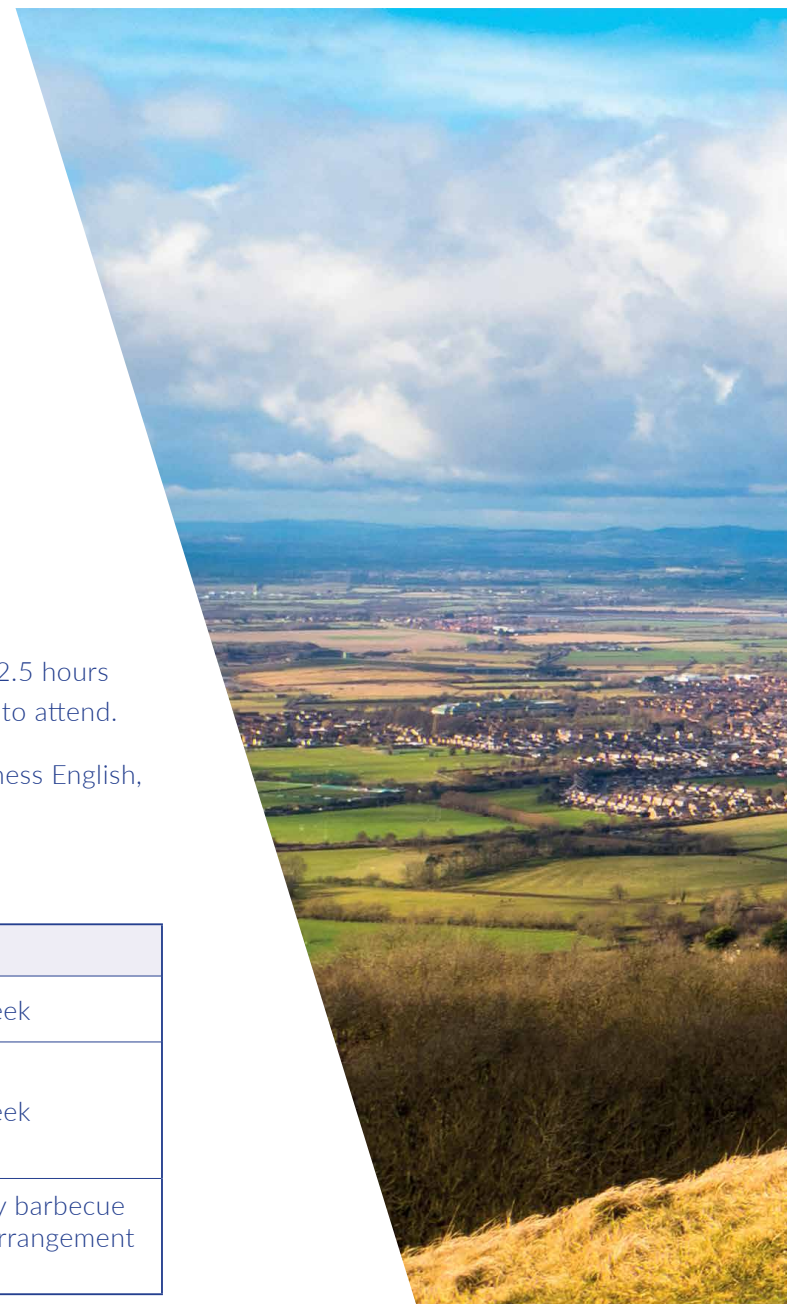
## Pay-as-you-go Summer School (16+ only)

If an all-inclusive package is too much for Summer School students we offer a General English course (15 or 22.5 hours per week) and give students the option to select and pay for the activities and excursions that they would like to attend.

The afternoon sessions include specific skills development (listening, pronunciation, reading and writing), Business English, discussions, conversation and role plays.

## Academic Extra English Extra Summer Programme

| Course Summary  | Start Dates                                | Course Code | Number of weeks | Fees          |
|---|--|-------------|-----------------|---------------|
| June, July and August only.<br>Minimum stay 2 weeks.  | Courses start every Monday, from 14/6/2021 | AEEXP30     | 1 – 4           | £795 per week |
|   | Courses finish on 20/8/2021                |             | 5 - 8           | £735 per week |
| <b>What is included?</b> 30 x 45 minute lessons per week (LSP 30), Social Programme, 4 evening activities, Friday barbecue plus full day excursion on Saturday's including admission and transport), Registration fee, Accommodation Arrangement Fee and half board accommodation with host family. |  |             |                 |               |



## Sample English Extra Summer School Activity Programme - Week 1

|                  | Morning<br>09.00 – 12.15                              | Afternoon<br>13:30 -17:00/17:30<br>(Approx.)    | Evening<br>1930-2130             |
|------------------|---|---|----------------------------------|
| <b>Sunday</b>    | Arrive to Cheltenham. Pick up from designated airport |   |                                  |
| <b>Monday</b>    | Welcome: Testing of language level and induction      | The Pump Room with a walking tour of Cheltenham | Games Night                      |
| <b>Tuesday</b>   | Lessons   | Sports Afternoon                                | Pizza Night                      |
| <b>Wednesday</b> | Lessons   | Oxford and Christchurch College                 | Karaoke Night                    |
| <b>Thursday</b>  | Lessons   | Laser Quest                                     | Disco/ Theme party at the school |
| <b>Friday</b>    | Lessons   | BBQ at the school                               | Evening spent with host family   |
| <b>Saturday</b>  | Full day excursion to London with River Cruise        |   |                                  |
| <b>Sunday</b>    | Time spent with host family                           |   |                                  |

## Sample English Extra Summer School Activity Programme - Week 2

|                  | Morning<br>09.00 – 12.15                              | Afternoon<br>13:30 -17:00/17:30<br>(Approx.)        | Evening<br>1930-2130             |
|------------------|---|---|----------------------------------|
| <b>Sunday</b>    | Arrive to Cheltenham. Pick up from designated airport |   |                                  |
| <b>Monday</b>    | Welcome: Testing of language level and induction      | Scavenger Hunt                                      | Movie Night                      |
| <b>Tuesday</b>   | Lessons   | Sudeley Castle                                      | Fish and Chips Night             |
| <b>Wednesday</b> | Lessons   | Bristol and SS Great Britain                        | inlingua Got Talent Show         |
| <b>Thursday</b>  | Lessons   | Funky Warehouse – Trampoline and Parkour experience | Disco/ Theme party at the school |
| <b>Friday</b>    | Lessons   | BBQ at the school                                   | Evening spent with host family   |
| <b>Saturday</b>  | Full day excursion to Bath and the Roman Baths        |   |                                  |
| <b>Sunday</b>    | Time spent with host family                           |   |                                  |

**Please note:** Groups and individuals who are under 16 during Summer School can only join the English Extra Summer Programme as illustrated above. Individuals not attached to a group with leaders will be part of a Group led by an inlingua member of staff who will be their group leader for the duration of their stay and who you will meet on your first day.



# Teacher Training (Erasmus+)

## CLIL (Content Language and Integrated Learning)

Compliant with Erasmus+ Funding Criteria

### What is CLIL?

CLIL aims to introduce students to new ideas and concepts in traditional curriculum subjects using the foreign language as the medium of communication - in other words, to enhance your pupils' learning experience by exploiting the synergies between the two subjects. This is often particularly rewarding where there is a direct overlap between the foreign language and the content subject.

### What are the practical implications of introducing CLIL into the school curriculum?

Teachers need to design materials to suit the needs of their learners, and to enable them to develop until they are working at high levels of cognitive and linguistic challenge.

Our CLIL course will allow teachers to build upon their existing language and learn new ideas and concepts to help teach their academic subject. The course is designed to give teachers an insight into how young people learn languages and how they could teach them. A significant component is giving the teacher the tools to continue to build upon their knowledge and learning after the course in order to continue to gain maximum benefit. The course is designed for non-native English speaking qualified teachers who are required to teach their academic subject in English.

**Please Note:** Work Shadowing in local Primary and Secondary schools can be arranged, ask for details.



## Teacher Refresher Courses (Erasmus+)

### What is TEFL Refresher?

Every now and then, even successful, experienced English language teachers can benefit from a refresher. An advanced English teaching course is the perfect chance to explore the latest methodologies and get back in touch with the language you teach

This course will help you refresh your skills and renew confidence in your ELT classroom skills. The course is designed for teachers of English from all over the world who want to develop their language training techniques. There is an element of General English development included in the course as well as development of methodology, classroom techniques and up to date resources to use in your classroom.

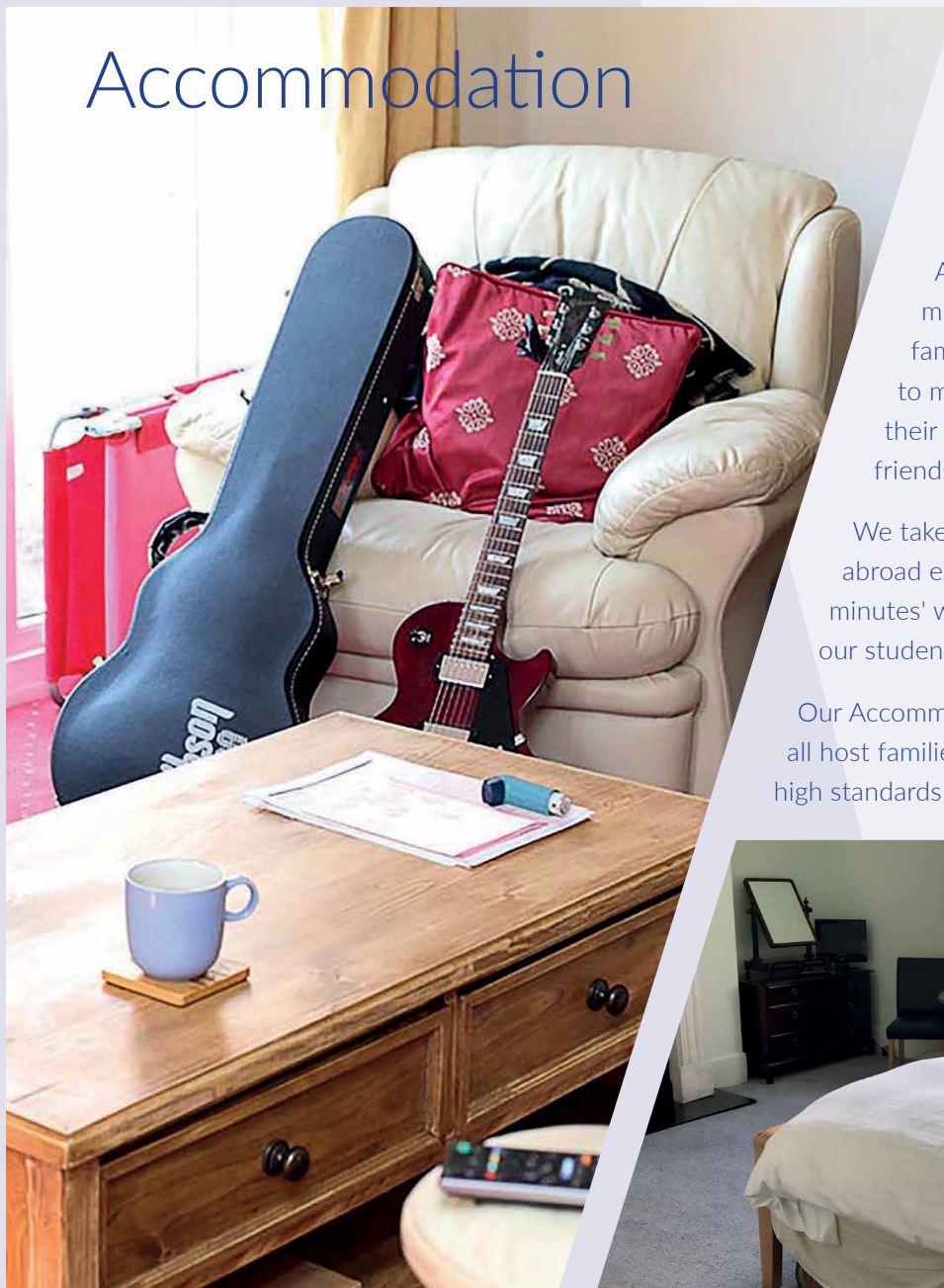
| Details   | Start Dates | No of weeks | Cost per week | Total cost for tuition |
|---|-------------|-------------|---------------|------------------------|
| CLIL course for Primary and Secondary School subject teachers and Teacher Refresher Courses | 22.02.2021  | 2           | £295          | £590                   |
|   | 12.04.2021  | 2           | £295          | £590                   |
|   | 10.05.2021  | 2           | £295          | £590                   |
|   | 21.06.2021  | 2           | £295          | £590                   |
|   | 05.07.2021  | 2           | £295          | £590                   |
|   | 09.08.2021  | 2           | £295          | £590                   |
|   | 25.10.2021  | 2           | £295          | £590                   |

**Prices includes:** Tuition, Books and Materials, Full Health and Travel Insurance





# Accommodation



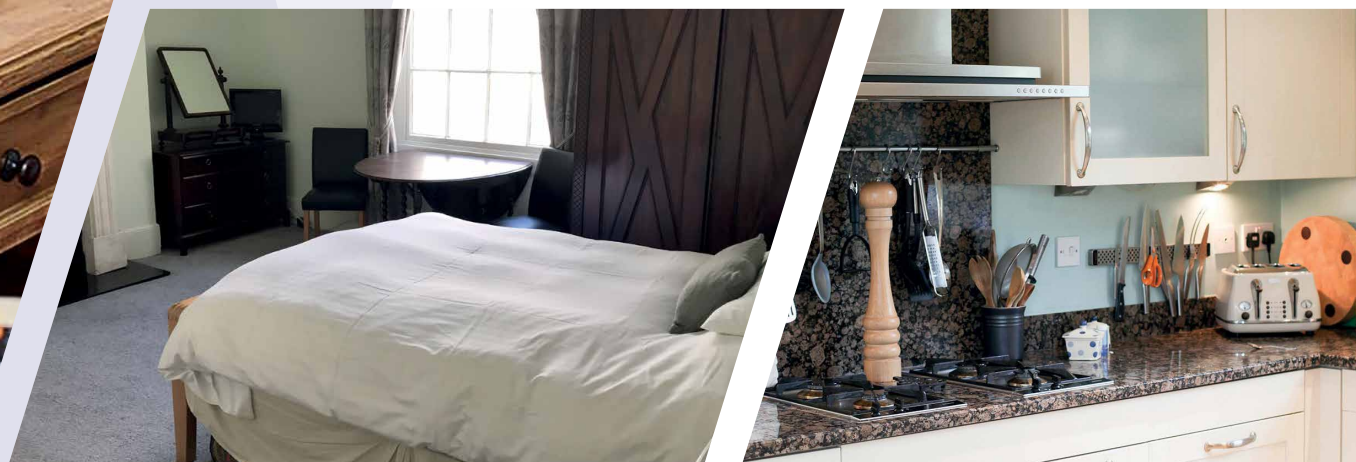
## Host Family Accommodation

Students often say that their living situation is almost as important as their course. Living with a local family gives the student a chance to practice their social English in the evenings as well as share cultures with their hosts.

A large number of our host families have welcomed students into their homes for many years and are very experienced and sensitive when a new student joins their family. Students do not often know what to expect and at inlingua Cheltenham we like to make sure that they are as informed as they can be about their new family before their arrival and put student and family in touch. Many students and host families become friends and stay in touch long after the student has finished their course.

We take pride in our host families and appreciate how integral they are to the student's study abroad experience. Our host families are predominantly native English speakers, within 30 minutes' walk or bus ride of the school and regularly in contact and visited so we can provide our students with the highest standards possible of accommodation.

Our Accommodation is organised in-house by our Accommodation and Reception Manager and all host families offered by inlingua Cheltenham are checked on a regular basis and conform to the high standards expected by the British Council.



**Standard Homestay:** is half board and includes breakfast and dinner Monday to Friday, and all three meals at the weekend

**Executive Homestay:** is standard homestay plus private bathroom

**Full Board:** is breakfast, packed lunch and dinner Monday to Friday and all three meals at the weekend.

**Self-Catering:** is in a host family with access to the kitchen

**Please Note:** Normal arrival and departure day is Sunday (The charges stated are for 7 nights accommodation).

**Summer supplement:** In July and August host family payments increase by £15 per week to cater for peak seasonal demand. i.e. standard homestay is £170 per week.

**Christmas Holidays:** Students are welcome to stay during the Christmas period when there are no lessons with their host families. However, these two weeks will be charged at the Executive Homestay rate of £205 per week and full board will be provided.

## Prices

|                                    |                     |
|------------------------------------|---------------------|
| Standard Homestay                  | £155 per week       |
| Standard Homestay Full Board       | £175 per week       |
| Executive Homestay                 | £205 per week       |
| Executive Homestay Full Board      | £225 per week       |
| Self-Catering Homestay             | £115 per week       |
| Hotel, Serviced Apartments and B&B | £50 - 140 per night |

## Other Options

### Hotels

Although we strongly recommend host family accommodation to all our clients due to the value of developing your English socially, some people prefer to stay at one of the many hotels near the school. The school has a variety of hotels in close proximity. Please ask for our up to date list of hotels.

### Serviced Apartments

If you want to be more independent, we offer a wide range of self-catering accommodation. The different options available are:

- Serviced apartments/short term rental
- Self-catering in a homestay

If you wish to take advantage of this type of accommodation then please note that this can take longer to arrange and prices will vary.

### Guest House / Bed and Breakfast / Hostel

Cheltenham has a wealth of other accommodation options such as Guest Houses, B&Bs and Hostels. If you would like this type of accommodation please ask us for a list of possible places to stay.



# General Information



# How to get to inlingua Cheltenham

## By coach

National Express coaches arrive in the centre of Cheltenham, five minutes' walk from the school. Coaches run from all major ports and cities in the UK. There is an excellent direct coach service from London Heathrow that takes approximately 2 hours. National Express bus tickets can be booked on [www.nationalexpress.com](http://www.nationalexpress.com) or organised by inlingua Cheltenham.

## By train

Cheltenham Spa train station is on the outskirts of Cheltenham. Walking distance is around 25 minutes to the school. There are regular buses to the town centre and a taxi rank nearby. If you are coming from London then the train station in the capital is London Paddington. Train tickets can be bought online at [www.nationalrail.co.uk](http://www.nationalrail.co.uk).

## By car

We can arrange taxis for you from anywhere in the UK. If you are driving yourself, you can approach Cheltenham from the M5 motorway or the A40. Follow the signs for the town centre. Because of our location in the town centre, parking space next to the main school building is limited. However, there are various local parking facilities nearby.

## Airports

The nearest airports to Cheltenham are Bristol International and Birmingham International. However, there are excellent transport links from London Heathrow, London Gatwick, Luton, Stansted and Cardiff. There are many low cost airlines flying to and from various airports in the UK to European cities.

**These include:** [www.easyjet.com](http://www.easyjet.com), [www.ryanair.com](http://www.ryanair.com), [www.Eurowings.com](http://www.Eurowings.com)

## Airport transfers

| Return Coach Journey |     |
|----------------------|-----|
| Heathrow             | £80 |
| Gatwick              | £90 |
| Stansted             | £90 |
| Birmingham           | £75 |
| Bristol              | £75 |
| London Victoria      | £80 |
| Luton                | £85 |

| Taxi (one way only) |      |
|---------------------|------|
| Heathrow            | £165 |
| Gatwick             | £195 |
| Stansted            | £195 |
| Birmingham          | £125 |
| Bristol             | £125 |
| London Victoria     | £195 |
| Luton               | £165 |

These prices include inlingua Cheltenham's administration fee. Taxis can be shared between 2,3 or 4 people.

**Please note:** we reserve the right to charge an excess if your flight has been delayed or cancelled. This is to cover any costs charged to us by the taxi company.

## Travel within Cheltenham

Weekly bus tickets are available in Cheltenham which entitles you to unlimited travel on buses throughout Cheltenham. These are priced approximately GBP15 per week and can be purchased on board the bus or the from the bus station. For further information, see [www.stagecoachbus.com](http://www.stagecoachbus.com)

## Travel within the UK

Cheltenham's railway station has excellent connections throughout the UK, including direct trains to London, Cornwall, Birmingham, Bristol, Manchester, Edinburgh and many more places. For further information see: [www.nationalrail.co.uk](http://www.nationalrail.co.uk)

National Express is the main bus service in England. It offers expressway coach services linking many cities and towns. For further information see [www.nationalexpress.com](http://www.nationalexpress.com)



# Your First Day

## Lesson Times and EFL Language Levels

The times of your lessons during the weekday are as follows:

|               |                                    |
|---------------|------------------------------------|
| 09:00 – 10:30 | Double lesson                      |
| 10:30 – 10:45 | Break                              |
| 10:45 – 12:15 | Double lesson                      |
| 12:15 – 13:30 | Lunch                              |
| 13:30 – 15:00 | Double lesson                      |
| 15:00 – 15:15 | Break                              |
| 15:15 – 16:45 | Free time or Self Study or lessons |

## First Day at School

All new students begin their course on Monday mornings. Students staying in host family accommodation will receive directions how to get to school by their host family on the first morning. Students without host family accommodation will have received their school details before their arrival and should make their own way to the school for 0845.

## Testing

On the first day at inlingua Cheltenham, students are given a test to determine their current level of English. The test consists of multiple choice questions, written paper and an oral test so we can test at least three of the four skills. Students are then placed in a class at an appropriate level. Students are monitored closely and constantly by their teachers to ensure that they are always at the correct learning level.

## Orientation

On the first day, students are given a tour of the school and town centre, pointing out areas of interest and importance.

## Self Study (Free every Weekday 1515-1645)

Every weekday afternoon between 1515-1645 inlingua Cheltenham offers a teacher led Self-Study session in our Learning Centre. The teacher is there to help the students with their homework or to explain some aspects of the class lesson they had difficulty with. This service is Free and available to all students.



## Student Levels determined by Exam

| Inlingua Level                 | CEFR   | Cambridge          | IELTS   | ESOL    | TOEIC   | Trinity GESE | Trinity ISE | Macmillan Online test | Inlingua Placement test |
|--------------------------------|--------|--------------------|---------|---------|---------|--------------|-------------|-----------------------|-------------------------|
| Beginner APP IA                | Pre-A1 |                    |         |         |         | 1            |             | Level 1: 0-20<br>0    | 0-20                    |
| Beginner APP IB                | A1     |                    | 1.0-2.0 | Entry 1 |         | 2            |             | Level 2: 21-30        | 21-35                   |
| Pre-intermediate APP2A-2B      | A2     | KET                | 2.0-3.0 | Entry 2 | 15-300  | 3-4          | ISE 0       | Level 3: 31-50        | 36-50                   |
| Pre-intermediate APP2A-3A      | B1     |                    | 3.5-4.0 | Entry 3 | 350-500 | 5            |             | Level 4: 51-63        | 51-70                   |
| Established intermediate       | B1+    | PET                | 4.5-5.0 |         |         | 6            | ISE 1       |                       |                         |
| Upper intermediate APP 38-4A   | B2     |                    | 5.5-6.0 | Level 1 | 600-750 | 7-8          |             | Level 5: 64-80        | 71-90                   |
| Established upper intermediate | B2+    | Cambridge First    | 6.5     | Level 2 |         | 9            | ISE II      |                       |                         |
| Advanced APP 4A-4B             | C1     |                    | 7.0-7.5 |         | 800-850 | 10           |             | Level 6: 81-100       | 91-100                  |
| Established Advance            | C1+    | Cambridge Advanced | 7.5-8.0 |         |         | 11           | ISE 111     |                       |                         |
| Established Proficient APP 4B  | C2     |                    | 9.0     |         |         | 12           | 1SE 1V      |                       |                         |

## When the school is open or closed

| Dates   | English and Voc School and Public Holidays national Centre | Business Centre      |
|---|--|----------------------|
| 1st January 2021                              | Closed   | Closed               |
| 2nd April 2021 (Good Friday)                  | Open for all lessons                                       | Open for all lessons |
| Monday 5th April 2021 (Easter Monday)         | Closed   | Open for all lessons |
| Monday 3rd May 2021 (May Day Holiday)         | Closed   | Open for all lessons |
| Monday 31st May 2021 (Spring Bank Holiday)    | Closed   | Open for all lessons |
| Monday 30th August 2021 (Summer Bank Holiday) | Closed   | Open for all lessons |
| 17th December 2021 to 2nd January 2022        | Closed   | Closed               |



# General Information

## Medical and Travel Insurance

All students under 70 years old are insured against Medical and Travel costs while at the school under the Gibbs Denley StudentGuard Policy. Students should consider whether they are adequately insured for their possessions or pre-existing medical conditions.

Our policy is available to view on our website and covers eventualities like cancellation, course fees and medical expenses. It is your responsibility to check that you have cover for everything that you require. A copy of what the policy covers is available on request.

## Climate

Cheltenham has a variable but generally mild climate and weather extremes are rare. Students should come prepared for all types of weather during their stay in England. For information on English weather today and a forecast for the week visit [www.bbc.co.uk/weather](http://www.bbc.co.uk/weather)

## Mobile Phones

Mobile telephones can be brought into England. Customers with subscriptions to GSM services, providing they have a roaming agreement with the English network operator(s) may use their subscription. Pay-as-you-go mobile phones are available in Cheltenham shops. You can buy a mobile in Cheltenham for as little as £20 and a SIM card on 'Pay as you go' arrangements. For information on the major mobile phone operators in England, please see links below:

[www.vodafone.co.uk](http://www.vodafone.co.uk)  
[www.ee.co.uk](http://www.ee.co.uk)  
[www.carphonewarehouse.com](http://www.carphonewarehouse.com)  
[www.three.co.uk](http://www.three.co.uk)

## Banks

Banks are open Monday to Friday from 0900 to 1700. ATMs in England accept most major credit cards. Visitors are advised to change their bank notes at banks and the Bureau de Change to get the best exchange rate. Opening a bank account in England is an option for students staying three months or longer and have booked and paid for at least 12 weeks accommodation. We are able to give advice on opening a bank account. Full details will be given at reception when the students arrive here at inlingua Cheltenham.

## Shops

The opening hours of most shops in England are 0900 until 1800, Monday to Saturday. Supermarkets and shops are open on Sunday from 1100 to 1600.

## Entertainment

Cheltenham has a wide variety of entertainments on offer including numerous shops, restaurants, pubs and bars, discos, 3 theatres, an 11 screen cinema, minigolf, recreation centre and a number of beautiful parks - ideal in the summer! For further useful information about Cheltenham and the Cotswolds, please visit the following links:

[www.visitcheltenham.gov.uk](http://www.visitcheltenham.gov.uk)  
[www.explore-gloucestershire.co.uk/cheltenham](http://www.explore-gloucestershire.co.uk/cheltenham)

## Telephone

**Calling into England:** When making a call into England from another country, the lead zero of the area code is dropped and the country code for England (+44) is added. For example, to reach inlingua Cheltenham, you will dial the number as +44 1242 250 493.

**Calling out of England:** When making a call to another country, the international access code is "00" or + followed by the country code for the country you are calling, followed by the area code then phone number.

# Additional Expenses 2021

## Registration and Accommodation Arrangement Fees:

(These only apply to courses mentioned in the English and Vocational Course brochure)

**Registration Fee:** £60 (non refundable, this must be sent with your application form) **Accommodation Arrangement Fee:** £40 (non refundable, this must be sent with your application form if applicable)

**Medical and Travel Insurance:** This is included in the fees and is offered through a company called Gibbs Denley StudentGuard policy. What is covered can be seen on our website [www.inlingua-cheltenham.co.uk](http://www.inlingua-cheltenham.co.uk) or can be sent to you upon request.

## Accommodation

|   |                       |                                      |               |
|---|-----------------------|--------------------------------------|---------------|
| <b>Standard Homestay</b>                      | £155 per week         | <b>Standard Homestay Full Board</b>  | £175 per week |
| <b>Executive Homestay</b>                     | £205 per week         | <b>Executive Homestay Full Board</b> | £225 per week |
| <b>Self-Catering Homestay</b>                 | £115 per week         |                                      |               |
| <b>Hotel, Serviced Apartments and B&amp;B</b> | £50 to £140 per night |                                      |               |

**Please Note:** Normal arrival and departure day is Sunday (The charges above are for 7 nights accommodation).

**Summer supplement:** In July and August host family payments increase by £15 per week to cater for peak seasonal demand i.e standard half board homestay is £170 per week.

**Christmas Holidays:** Students are welcome to stay during the Christmas period when there are no lessons with their host families. However, these two weeks will be charged at the Executive Homestay rate of £205 per week and full board will be provided.

All host families offered by inlingua Cheltenham are checked on a regular basis and conform to the high standards expected by the British Council. Please be careful when booking families over the internet as they may not have been checked and we have no control over the service they offer.

**Standard Homestay:** is half board and includes breakfast and dinner, Monday to Friday, and all three meals at the weekend.

**Executive Homestay:** is standard homestay plus private bathroom.

**Full Board:** is breakfast, packed lunch and dinner Monday to Friday and all three meals at the weekend.

**Self-Catering:** is in a host family with access to the kitchen.

If you choose to pay your accommodation fees in instalments, the school will charge, at its discretion, a £25 administration fee.



# Additional Expenses 2021 (continued)

## Airport Transfers (Coach or Taxi)

| Return Coach Journey   |                    |     | Taxi (one way only)   |                    |      |
|--|--------------------|-----|---|--------------------|------|
| <p>We can arrange a return (two way) coach ticket for you from the following airports / stations</p> <p><b>Note:</b> These prices include inlingua Cheltenham's administration fee</p> | Heathrow           | £80 | <p>We can arrange a pick up and drop off service at most places in England.</p> <p><b>Note:</b> Here are the one way prices for most destinations. Students arriving in groups of 2, 3 or 4 can share taxi costs.</p> | Heathrow           | £165 |
|  | Gatwick / Stansted | £90 |   | Gatwick / Stansted | £195 |
|  | Birmingham         | £80 |   | Birmingham/Bristol | £125 |
|  | London Victoria    | £90 |   | London Victoria    | £195 |
|  | Luton              | £80 |   | Luton              | £165 |

## Examination Fees

|   |   |                              |      |
|---|---|------------------------------|------|
| <p>The examination fees include a nominal charge for administration related to setting up the examination and enrolment</p> | Cambridge ESOL Exams Gatwick / Stansted | PET and KET                  | £140 |
|   |   | Cambridge First and Advanced | £140 |
|   | IELTS and Linguaskill Exams             | IELTS (SELT centre)          | £225 |
|   |   | Linguaskill                  | £90  |

## How to Apply to the School

Please apply as early as possible so we have time to process your application and find you the right type of accommodation and make arrangements for your visa if one is required.

General and Intensive English courses (including Vocational programmes)

1. You need to complete an Enrolment form. You will find an Enrolment form in this brochure on page 45 and 46 or obtain one by email, post or online at [www.inlingua-cheltenham.co.uk](http://www.inlingua-cheltenham.co.uk).
2. You need to calculate the total cost of your course by adding together:
  - Total tuition fee
  - £60 Registration Fee (if applicable)
  - Total accommodation price (if required)
  - £40 Accommodation Arrangement fee (if booking accommodation)
  - Airport transfers and other transport services
3. Please email or post the application form, together with your Registration Fee (£60), Accommodation Arrangement Fee (£40).
4. Send us your flight, train or coach details as soon as you have arranged your travel even if you have not booked the airport meeting and transport service through the school.
5. Tell us immediately if you have to change your course dates because of any delays or if your visa has been refused.
6. Pay the balance of your fees at least three weeks before your arrival date.

**Please note:** If you are a Visa student upon confirmation of your enrolment and invoice you must pay 15% deposit of the total invoice value before we issue the visa documents.

**Please note:** Upon successful completion of your Visa application, full payment of remaining fees must be paid at least 3 weeks before course starts.

**Please note:** If you were unsuccessful in gaining a Visa, the deposit is refunded in full, but not the Registration, Visa Application and Accommodation Arrangement Fees and any other costs the school have incurred i.e. bank charges, courier fees.

## How to Pay

The invoiced total is normally for full payment in advance for the course and accommodation. All payments must be made in £ Sterling (GBP).

### You can pay:

- By cash direct to the school, (Do not send cash in the post).
- By a cheque drawn on an English bank, payable to inlingua Cheltenham.
- By Sterling bank transfer through your bank or via our website 'Pay to Study'
- By Credit Card via our website, please go to the link 'Pay to Study'

**Name of Account:** English and Vocational Academy (EVA) Ltd  
t/a inlingua Cheltenham  
**Bank:** Lloyds  
130 High Street  
CHELTENHAM GL50 1EW  
**Account Number:** 34564760  
**Sort Code:** 30-95-72  
**IBAN Code:** GB02 LLOYD 309572 34564760  
**BIC Code (Swift):** LOYDGB21108

(If you are paying by Sterling Bank Transfer, you should email or send a copy of the transfer document with your Enrolment form. Please ask the bank to include your name and invoice number or student number on the transfer).

We hope everything in this section is understandable and clear, if for some reason it is not clear please ask, we are here to help:

**inlingua Cheltenham**, Rodney Lodge, Rodney Road, Cheltenham, Gloucestershire, England. GL50 1HX  
Tel: +44 (0) 1242 250493  
Email: [info@inlingua-cheltenham.co.uk](mailto:info@inlingua-cheltenham.co.uk)  
Web: [www.inlingua-cheltenham.co.uk](http://www.inlingua-cheltenham.co.uk)

### Course Fees

All course tuition fees include books and materials. If there are any changes to the UK VAT laws, inlingua Cheltenham books and reserves the right to pass on those changes to the client.

### Deposit and Payment

A non-returnable Registration Fee of £60 along with the Accommodation Arrangement Fee of £40.

### Visa Students only

A further deposit of 15% of the total invoice value (in all cases a minimum of £100) should be paid on receiving course confirmation and the invoice.

Payment of the 15% will then be credited to your account and a new invoice will be produced for visa purposes. Only after receiving

the deposit are we able to issue a Confirmation of Enrolment and your unique visa reference number.

The rest of the course fee is payable in full no later than three weeks before the course commences. If a course is booked less than three weeks before the commencement dates, full payment should be made on receipt of the course confirmation and invoice, otherwise this will be subject to an interest charge of 8% per month or part thereof up to the first day of the course and until payment is received.

We reserve the right to cancel or terminate any course that has not been paid and students will not be allowed to start their courses until payment has been received.

Please ensure that when you pay the fees you also pay the bank charges for the transfer so that the school receives the full amount. Shortfalls in payment will be requested and interest charged if need be.

Ensure when making your payment that you indicate who the payment is for so as to avoid embarrassing situations when we chase for payments. If a student wishes to pay their accommodation fees in instalments an admin fee of £25 per instalment paid will apply. Tuition fees should be paid in full before the course starts.

## How to Pay Confirmation

We reserve the right not to accept a student and/or to terminate without notice a course that has already begun if payment is not made in full in accordance with our payment terms.

### Cancellation

A cancellation charge will apply according to the following scale:

- up to 21 days before the course begins: lose deposit plus non-refundable fees
- 21 days to 15 days 33% of the total invoice
- 14 days to 8 days 66% of the total invoice
- 7 days to 3 days 75% of the total invoice
- 2 days or less 100% of the total invoice
- no refunds will be made after the course has started

If a course is cancelled due to an unsuccessful visa application, all fees paid to us (minus our bank charges, Registration, Visa Application, Accommodation Arrangement and Courier fees) will be refunded in full, on receipt of written confirmation from the Visa Section of the British Embassy that your visa application has been unsuccessful.



## Group Courses

### General English

If there are fewer than three students on a Language Skills Programme 20 or 30 course, the number of lessons per day may be reduced according to the following scale:

#### LSP30

2 students – from 6 to 3 lessons

1 student – from 6 to 2 lessons

#### LSP20

2 students – from 4 to 2 lessons

1 student – from 4 to 1 lesson

We reserve the right to offer LSP/20 lessons in the afternoon should we, at our sole discretion; feel that this is in the students' or schools' best interests.

### Bank Holidays

Please also note that there are no group course lessons on Bank Holiday Mondays - EXCEPT in the Business Centre where classes run as normal. Please refer to Public Holidays dates on page 58 of this brochure. Students on short courses (1, 2 or 3 weeks) will have extra lessons to compensate for loss of lessons on Bank Holiday Mondays if it occurs.

### Extending Your Course

If you are a student with or without a visa you can extend your stay if you wish, and your visa allows. We will add the number of weeks of your original booking to your extension and this may mean you will pay a lower price per week for your extension depending which price bracket you fall in to. Please refer to the price list for details.

### Taking Holidays

If you have booked a long duration course of 12 weeks or more and wish to take a holiday during your course, this is possible AS LONG AS you request the number of weeks you wish to take for holidays at point of booking and when at the school you give us four weeks' notice in writing before taking the holiday. We normally allow students to take a maximum of 1 week's holiday for every 12 weeks that they are in the school.

Holidays arranged after the time of booking or exceed those pre-booked will be treated as absences and you will lose those weeks of tuition.

Alternatively you can ask for the free weeks as holiday. Please note no refund or extension will be granted in this situation. If you wish to retain your accommodation you must pay a retainer of £50 per week to the host family while you are away. If students shorten their course there is no refund of fees

### Long-Term Bookings

Students cannot reduce the length of their course by changing programmes. Under Home office visa regulations we are responsible and duty bound to look after you for the whole duration of your course.

All examination classes are in the afternoon. Students who want exam classes must book the LSP 30 course. It is not possible to book LSP 20 and then change the timetable to 10 lessons in the morning and 10 lessons in the afternoon.

Any students in breach of their visa will be reported to immigration.

### Accommodation Fees

inlingua Cheltenham makes a charge of £40 for arranging accommodation. This charge is also applied if you change host families unless it is deemed the family is unsuitable for you. Please note to change a family is possible but you must have a good reason to do so. The fee that you pay to us for host family accommodation irrespective of the Accommodation Arrangement Fee is what we pay to the host family.

We do, however, have a contract with the host family which stipulates that we must give them four weeks' notice if a student is going to change or leave the family. In exceptional circumstances (for example, the family does not provide what they have promised etc.) we may decide not to give the family 4 weeks' notice.

Examination Fees (for Cambridge examinations, IELTS etc.) are not included in the course price and will be charged separately.

If there are fewer than 5 people enrolled on an LSP30 programme specifically wanting to follow a published IELTS or Cambridge examination preparation Skills Session, we reserve the right to cancel the Skills Session and offer alternative Skills Sessions instead. In these rare situations, we will also offer an extra programme of supervised self-study, in order to help the students prepare for the exams.

## Activities and Excursions

### General English

Activities and excursions are normally offered as optional extras. These activities are organised for students and offered either free of charge or at cost price (when a cost is incurred by inlingua). Students who prepay activities on the summer programme will normally be guaranteed a place on the activities and excursions they have paid for, however they must still sign up for all activities and excursions, so that appropriate staffing and transport can be ordered.

### Medical and Travel Insurance

inlingua Cheltenham includes Medical and Travel Insurance as part of your tuition fee. This policy is through Gibbs Denley StudentGuard insurance covers you throughout your stay. Please ask for a copy of the insurance cover when you apply for your course or look at it on our website [www.inlingua-cheltenham.co.uk](http://www.inlingua-cheltenham.co.uk).

Students aged 18 and under will need to provide a signed Parental Consent Form for immigration and the school.

**Declaration by the client (or Guardian if under 18)** When you enrol on a course at inlingua Cheltenham, whether you complete an inlingua Cheltenham enrolment form, enrol via an agent or by any other means, your act of enrolment means that you are fully in accordance with our terms and conditions and agree to abide by them.

### Photography, film, sound recordings and written work

During our courses we sometimes take photographs, film footage and sound recordings, some of which may be incorporated in to but not limited to future publicity materials, social media sites, tests & educational material.

If you do **not** wish to participate in any of these please inform the school in writing before the start of the course.

Signed: .....

Date: .....



